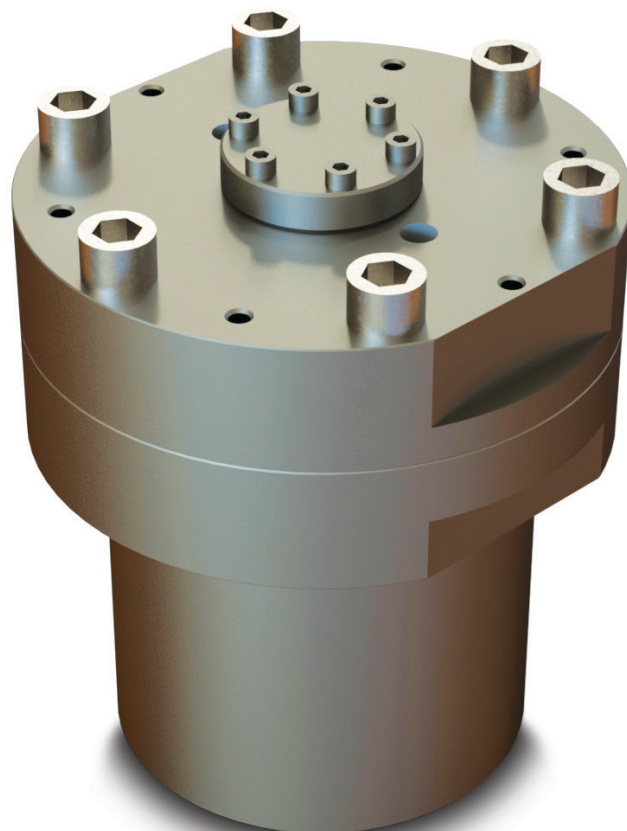


BOLTED CLOSURE PRESSURE VESSELS

FEATURES

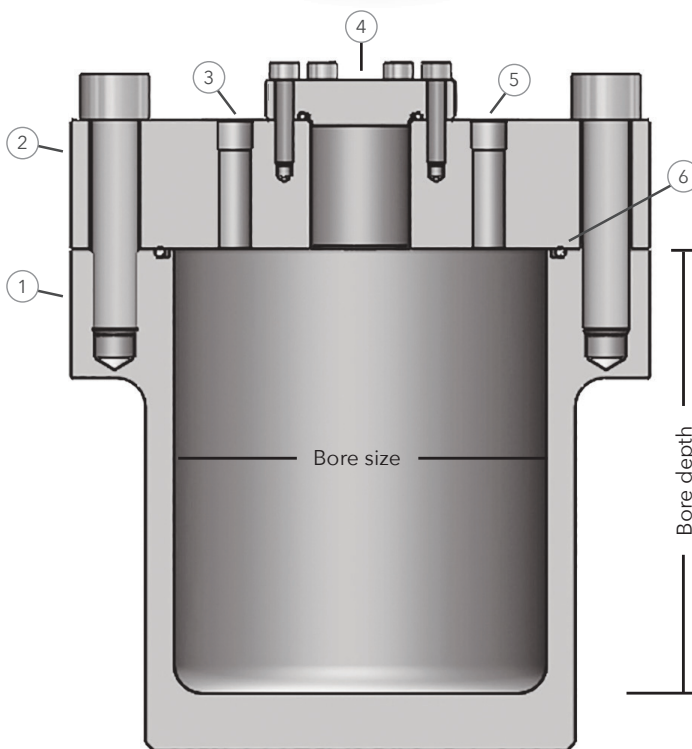
- Simple and easy to use, relatively low cost manufacture
- From 5 minutes to 1 hour open/close, depending on size/number of bolts
- Bolt tensioning devices are available for high torque applications
- Customer specific ports and penetrations
- Suitable for smaller bench-top/laboratory applications
- Ideal for high elevated temperature testing
- Practical for long term testing applications
- Available in various material grades
- Vertical and horizontal orientations



PARAMETERS

Pressure	6 bar to 2069 bar
Temperature	-196°C to +650°C
Bore size	Ø50mm to Ø1000mm
Bore depth	100mm to 2000mm
Volume	0.25 litre to 1500 litre
Ports	Customer specific
Material of Construction	Carbon or Alloy Steels

Custom solutions are available to meet specific requirements. Please contact our engineering and technical support who will help you identify the specific options you need.



- ① Body ③ Feed Through/ Tooling Port ⑤ Fill/Drain Port
② Closure ④ Blanking cap ⑥ Seal

BOLTED CLOSURE PRESSURE VESSELS

EXAMPLES

